

STRAINER TYPE 932

CHARACTERISTIC:

| | | |
|-------------|---|--|
| Diameter | - | 15 -200 mm; |
| Pressure | - | 160 bar; |
| Temperature | - | up to 560°C; |
| Medium | - | water, steam and other non-toxic, non aggressive liquid and gas media and engine fuel. |

VERSIONS:

type / ends / body material / others

Example: 932 / --- / --- / ---

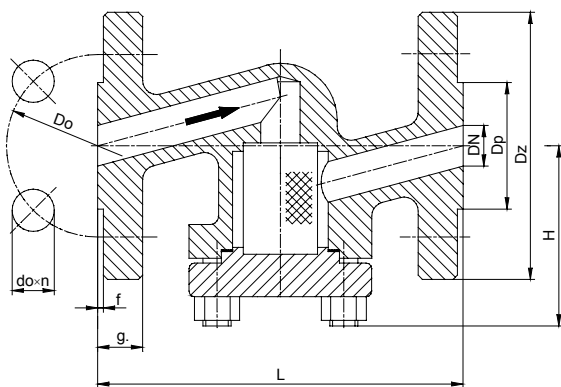
Example: 932 / S / U / AS

| Ends | Sign | Body material | Sign | Others | Sign |
|--------------------|------|-------------------------------|------|-------------------------------|------|
| Standard – flanged | --- | (P250GH) C 22.8 or GP240GH | --- | Standard – without drain plug | --- |
| Butt weld ends | S | | | With drain plug | AS |
| Socket weld | SW | 16Mo3 or G20Mo5 | U | | |
| Threaded | G | 13CrMo4-5 or G17CrMo5-5 | A | | |

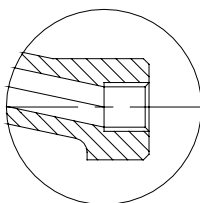
APPLICATION:

Strainers are used to protect the pipeline and its equipment from impurities. The strainer stop every mechanical impurities bigger then mesh size. The strainers can be made with drain plug for special order.

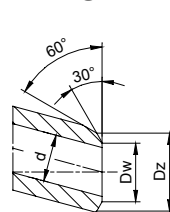
DN 15 - 40



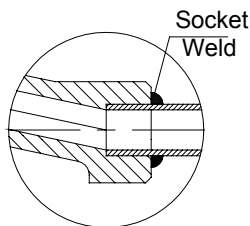
"G"



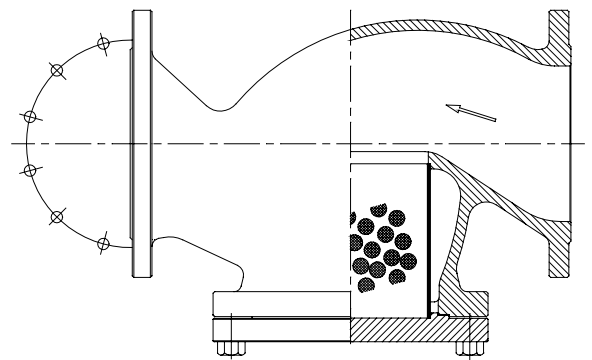
"S"



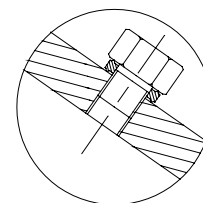
"SW"



DN 50 - 200



Drain plug (in order)
"AS"



WK



FABRYKA ARMATURY PRZEMYSŁOWEJ

„WAKMET” spółka jawna

Kaczmarek, Krzywdziński, Wachowski, Wilczyński

Bodzanów 75 48-340 GŁUCHOŁAZY 1

tel. +48(077) 439-40-20, fax +48(077) 439-18-72

e-mail: wakmet@wakmet.com.pl

http: www.wakmet.com.pl

MATERIALS:

| Versions | Standard | U | A | Standard | U | A |
|---------------|-------------------------------|------------------------|------------------------|------------------------|------------------------|------------------------|
| Parts | T _{MAX} 450°C | T _{MAX} 530°C | T _{MAX} 560°C | T _{MAX} 450°C | T _{MAX} 530°C | T _{MAX} 550°C |
| | DN 15 - 40 | | | DN 50 - 200 | | |
| Body , bonnet | (P250GH) C22.8 (1.0460) | 16Mo3 (1.5415) | 13CrMo4-5 (1.7335) | GP240GH (1.0619) | G20Mo5 (1.5419) | G17CrMo5-5 (1.7357) |
| Strainer | X6CrNiTi18 10 (1.4541) | | | | | |
| Gasket | Grafit + austenite | | | | | |

Special materials on request; modifications reserved.

DIMENSIONS:

| Standard - flanged | | | | | | | | | | | | With butt weld ends | | | |
|--------------------|-----|-----|-----|-----|----|----|-----|----|---|-----|--------|---------------------|-------|-----|--------|
| DN | d | Dz | Dp | Do | do | n | L | g. | f | H | Weight | Dz | Dw | L | Weight |
| 15 | 14 | 105 | 45 | 75 | 14 | 4 | 210 | 20 | 2 | 70 | 4,00 | 22 | 17 | 160 | 2,70 |
| 20 | 19 | 130 | 58 | 90 | 18 | 4 | 230 | 22 | 2 | 75 | 6,20 | 28 | 21 | 160 | 2,70 |
| 25 | 23 | 140 | 68 | 100 | 22 | 4 | 230 | 24 | 2 | 75 | 8,30 | 35 | 27 | 160 | 2,70 |
| 32 | 30 | 155 | 78 | 110 | 22 | 4 | 260 | 24 | 2 | 95 | 11,50 | 44 | 34,5 | 230 | 5,20 |
| 40 | 38 | 170 | 88 | 125 | 22 | 4 | 260 | 28 | 3 | 95 | 14,80 | 50 | 43 | 230 | 7,70 |
| 50 | 45 | 195 | 102 | 145 | 26 | 4 | 300 | 30 | 3 | 140 | 15,70 | 62 | 52,5 | 300 | 12,90 |
| 65 | 62 | 220 | 122 | 170 | 26 | 8 | 340 | 34 | 3 | 170 | 37,50 | 77 | 65 | 340 | 26,30 |
| 80 | 73 | 230 | 138 | 180 | 26 | 8 | 380 | 36 | 3 | 195 | 40,30 | 91 | 76,5 | 380 | 27,50 |
| 100 | 94 | 265 | 162 | 210 | 30 | 8 | 430 | 40 | 3 | 200 | 54,00 | 117 | 98,5 | 430 | 37,20 |
| 125 | 120 | 315 | 188 | 250 | 33 | 8 | 500 | 44 | 3 | 225 | 76,00 | 144 | 120,5 | 500 | 48,90 |
| 150 | 144 | 355 | 218 | 290 | 33 | 12 | 550 | 44 | 3 | 300 | 151,00 | 172 | 144,5 | 550 | 101,10 |
| 200 | 195 | 430 | 285 | 360 | 36 | 12 | 650 | 60 | 3 | 400 | 215,00 | 223 | 189 | 650 | 135,00 |

Dimensions in mm; modifications reserved.

TECHNICAL DATA:

| Body material | PN | Maximal working pressure at working temperature | | | | | | | | | | | | | | | | |
|----------------------------|-----|---|-------|-------|-------|-------|-------|-------|-------|-------|-------|-------|-------|-------|-------|-------|-------|-------|
| | | 20°C | 100°C | 150°C | 200°C | 250°C | 300°C | 350°C | 400°C | 450°C | 480°C | 500°C | 510°C | 520°C | 530°C | 540°C | 550°C | 560°C |
| (P250GH)C 22.8 (1.0460) | 160 | 160,0 | 137,1 | 133,3 | 125,7 | 116,5 | 102,8 | 99,0 | 91,4 | 52,5 | - | - | - | - | - | - | - | - |
| 16Mo3 (1.5415) | 160 | 160,0 | 160,0 | 160,0 | 160,0 | 148,5 | 129,5 | 121,9 | 114,2 | 110,4 | 83,6 | 70,8 | 56,3 | 44,9 | 35,8 | - | - | - |
| 13CrMo4-5 (1.7335) | 160 | 160,0 | 160,0 | 160,0 | 160,0 | 160,0 | 148,5 | 137,1 | 129,5 | 121,9 | 111,3 | 104,3 | 88,3 | 71,6 | 59,4 | 46,4 | 37,3 | 30,4 |
| GP240GH (1.0619) | 160 | 160,0 | 137,1 | 133,3 | 125,7 | 116,5 | 102,8 | 99,0 | 91,4 | 52,5 | - | - | - | - | - | - | - | - |
| G20Mo5 (1.5419) | 160 | 160,0 | 160,0 | 160,0 | 160,0 | 148,5 | 129,5 | 121,9 | 114,2 | 110,4 | 83,6 | 70,8 | 56,3 | 44,9 | 35,8 | - | - | - |
| G17CrMo5-5 (1.7357) | 160 | 160,0 | 160,0 | 160,0 | 160,0 | 160,0 | 148,5 | 137,1 | 129,5 | 121,9 | 111,3 | 104,3 | 88,3 | 71,6 | 59,4 | 46,4 | 37,3 | 30,4 |

Mesh

- 100 meshes/cm²; basic mesh size 0,6 mm - standard
- 200 meshes/cm²; mesh size 0,35 mm;
- 400 meshes/cm²; mesh size 0,25 mm;
- 600 meshes/cm²; mesh size 0,1 mm.

MOUNTING AND OPERATING:

The valve can only be mounted and operated by skilled, properly trained and qualified personnel. Incorrect assembly or operation of the valve may have substantial impact on the entire system such as fluid leakage, reduction in system's function etc.

Before a strainer is installed the pipeline must be clean from any mechanical impurities. The compatibility of critical parameters of the flow must be checked with the parameters of the strainer. Strainer can be mounted to a pipe-line in horizontal position. The direction of the flow should only comply with the arrow marked on the body. The strainer should be cleaned every time a pipeline is stopped, after a repair and before heating season. In order to clean the strainer the bonnet must be taken off. The mesh can be washed with water under high pressure. Before the mesh is put in it must be dry. The strainer should be operated strictly with its assign.